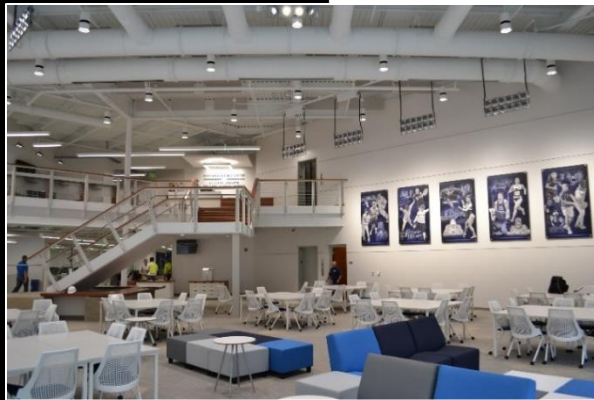


STAHL SHEAFFER ENGINEERING

- **Owner:**
The Pennsylvania State University
- **Services:**
Structural Engineering for Renovation & Redesign
- **Size:**
30,000 sf
- **Construction Cost:**
\$7,200,000
- **Year Completed:**
2016

The Morgan Academic Center is a vital component in keeping Penn State's academic services and the academic performance of its 800 student-athletes from 31 programs at the forefront among the nation's premier Division I institutions.



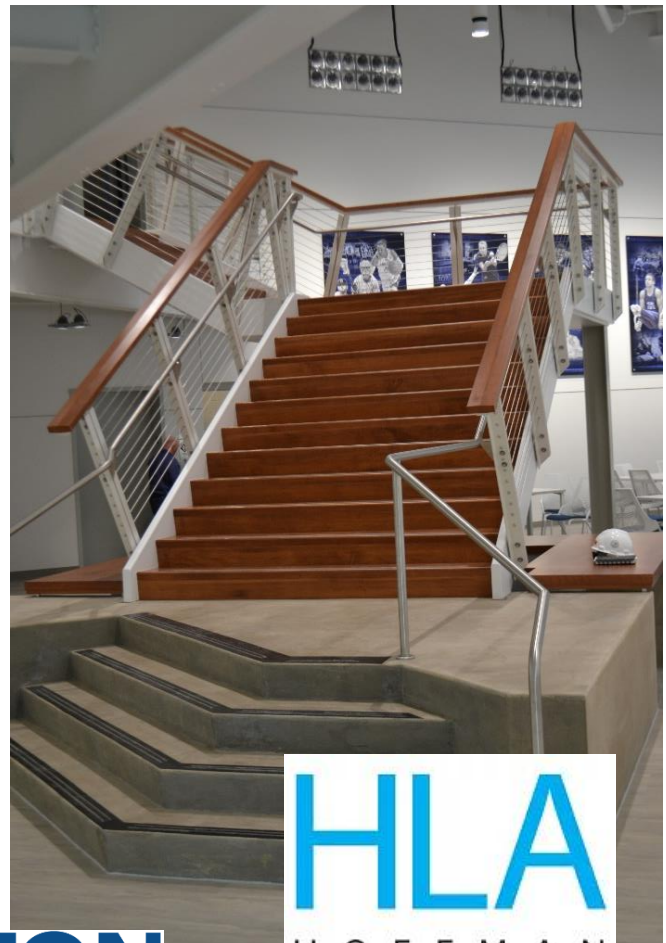
Project PennState

Penn State Morgan Center Academic Center Upfit, University Park, PA

Following the addition of the second floor in the former Greenberg Indoor Sports Complex, the front-of-house and lower floor were upfitted into the new home for the Morgan Academic Center, providing a central academic hub for Penn State student-athletes. Stahl Sheaffer was a design consultant on the team for structural engineering services. The northwest corner of the building was selectively demolished and rebuilt with curtainwall. Stahl Sheaffer assisted with details of new assembly and review of building stability. Stahl Sheaffer also assisted with detailing a new ornamental stair within a two-story atrium space, and considerations for modifying the existing lateral force resisting system for the new intended use of the space. Stahl Sheaffer prepared contract drawings to be sealed for submittal as part of permit application to L&I, including an on-drawing specification for materials and construction pertinent to Stahl Sheaffer's scope.

Read more here:

<http://www.centredaily.com/sports/college/article85256802.html#storylink=cpy>



HLA
H O F F M A N
L E A K E Y
ARCHITECTS LLC

www.sse-llc.com

BARTON
ASSOCIATES